

Firmware 1.0xSHC - How to login to router menu interface and upgrade firmware

Note: The router firmware will be required to upgrade TWICE throughout the entire process. Please ensure to follow through with this guide from start till end.

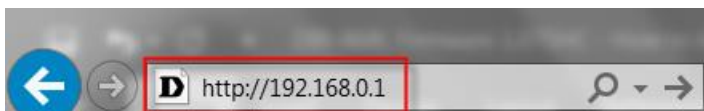
1.03SHC firmware and 1.03SHC below will be restore to factory settings once upgrade to 1.10SHC

You will be required to upgrade to Firmware 1.**10SHC** followed by Firmware 1.**21SHC**.

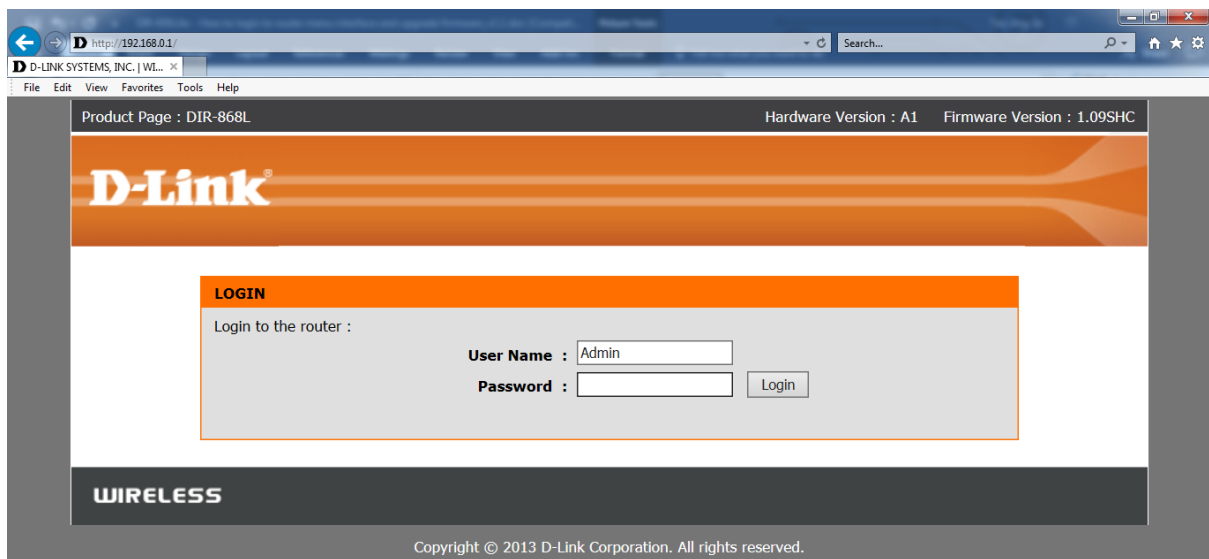
Note: Please ensure that you have the current admin login and password of the router. If you are unsure of the current login password, please factory reset the router and find the router wireless password which is on the sticker label at the base of the device.



Step 1: Open an Internet browser (such as Internet Explorer or FireFox) and enter <http://192.168.0.1> into the address bar.



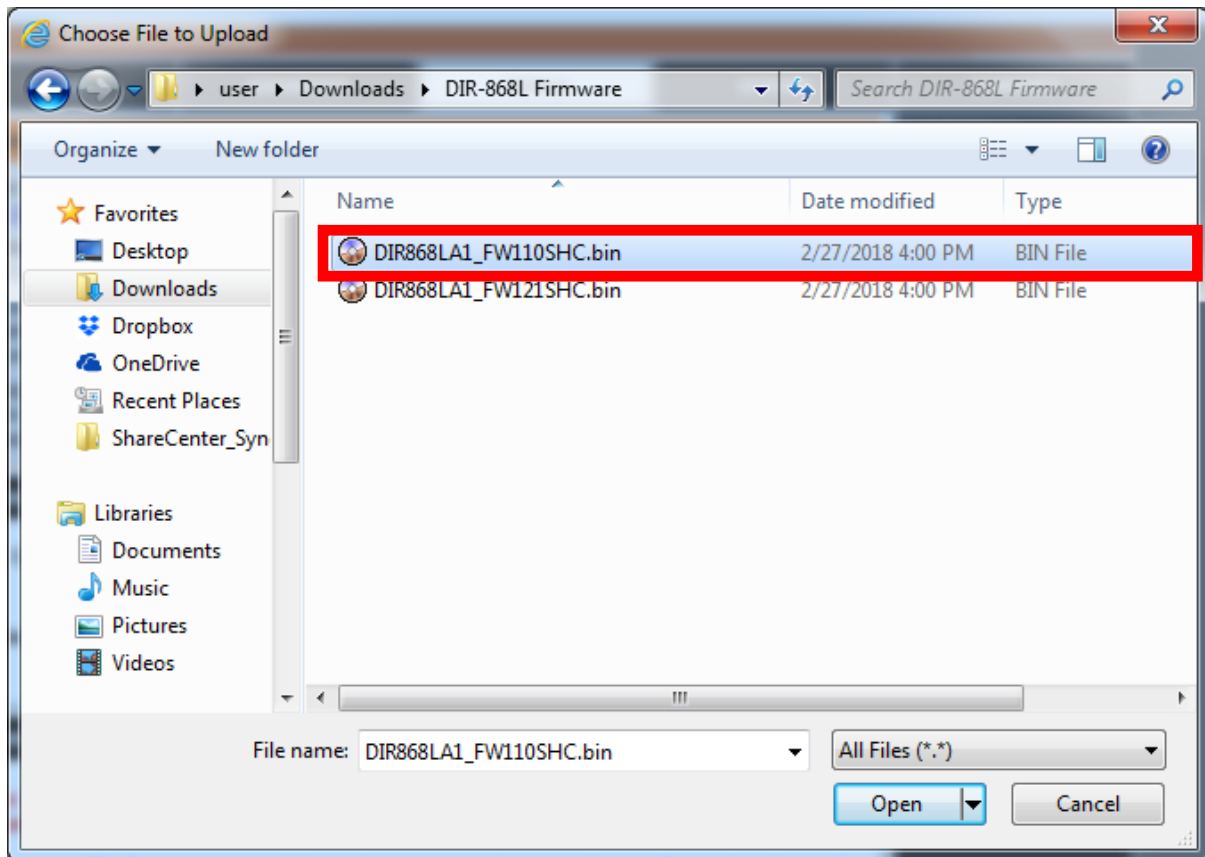
Step 2: The default username is Admin and the password is the same as the router wireless password entered. Click **Login**.



Step 3: Click the **Tools** tab at the top of the page and then click **Firmware** from the menu on the left-hand side. Click on Browse to locate the firmware folder.

DIR-868L //	SETUP	ADVANCED	TOOLS	STATUS	SUPPORT
ADMIN	FIRMWARE UPDATE				Helpful Hints... <ul style="list-style-type: none">• Firmware Update are released periodically to improve the functionality of your router and also to add features. If you run into a problem with a specific feature of the router, check our support site by clicking on the Check Now and see if an updated version of firmware is available for your router.• More...
TIME	There may be new firmware for your router to improve functionality and performance. Click here to check for an upgrade on our support site.				
SYSLOG	To upgrade the firmware, locate the upgrade file on the local hard drive with the Browse button. Once you have found the file to be used, click the Upload button to start the firmware upgrade.				
EMAIL SETTINGS	The language pack allows you to change the language of the user interface on the router. We suggest that you upgrade your current language pack if you upgrade the firmware. This ensures that any changes in the firmware are displayed correctly.				
SYSTEM	To upgrade the language pack, locate the upgrade file on the local hard drive with the Browse button. Once you have found the file to be used, click the Upload button to start the language pack upgrade.				
FIRMWARE	FIRMWARE INFORMATION				
DYNAMIC DNS	Current Firmware Version : 1.095HC Current Firmware Time : 03/07/2017 11:14:00 Check Online Now for Latest : <input type="button" value="Check Now"/>				
SYSTEM CHECK	FIRMWARE UPGRADE				
TR069	Note: Some firmware upgrades reset the configuration options to the factory defaults. Before performing an upgrade, be sure to save the current configuration.				
SCHEDULES	To upgrade the firmware, your PC must have a wired connection to the router. Enter the name of the firmware upgrade file, and click on the Upload button.				
	Upload : <input type="text"/> <input type="button" value="Browse..."/> <input type="button" value="Upload"/>				

Step 4: Ensure the firmware was successfully extracted from the zip contents. Select the desired **BIN** file and click **Open**.



Step 5: Click **Upload** to start the firmware upgrade process.

D-Link® Technical Support Setup Procedure

DIR-868L //	SETUP	ADVANCED	TOOLS	STATUS	SUPPORT
ADMIN	FIRMWARE UPDATE				Helpful Hints... <ul style="list-style-type: none">• Firmware Update are released periodically to improve the functionality of your router and also to add features. If you run into a problem with a specific feature of the router, check our support site by clicking on the Check Now and see if an updated version of firmware is available for your router.• More...
TIME	There may be new firmware for your router to improve functionality and performance. Click here to check for an upgrade on our support site.				
SYSLOG	To upgrade the firmware, locate the upgrade file on the local hard drive with the Browse button. Once you have found the file to be used, click the Upload button to start the firmware upgrade.				
EMAIL SETTINGS	The language pack allows you to change the language of the user interface on the router. We suggest that you upgrade your current language pack if you upgrade the firmware. This ensures that any changes in the firmware are displayed correctly.				
SYSTEM	To upgrade the language pack, locate the upgrade file on the local hard drive with the Browse button. Once you have found the file to be used, click the Upload button to start the language pack upgrade.				
FIRMWARE	FIRMWARE INFORMATION				
DYNAMIC DNS	Current Firmware Version : 1.105HC				
SYSTEM CHECK	Current Firmware Time : 09/30/2017 16:12:00				
TR069	Check Online Now for Latest : <input type="button" value="Check Now"/>				
SCHEDULES	Firmware Version				
	FIRMWARE UPGRADE				
	Note: Some firmware upgrades reset the configuration options to the factory defaults. Before performing an upgrade, be sure to save the current configuration.				
	To upgrade the firmware, your PC must have a wired connection to the router. Enter the name of the firmware upgrade file, and click on the Upload button.				
	Upload : C:\Users\user\Downloads\DIR-868L Firmwar <input type="button" value="Browse..."/>				
	<input type="button" value="Upload"/>				

D-Link®

FIRMWARE UPLOAD

The device is updating the firmware now.

It takes a while to update firmware and reboot the device. Please DO NOT power off the device.

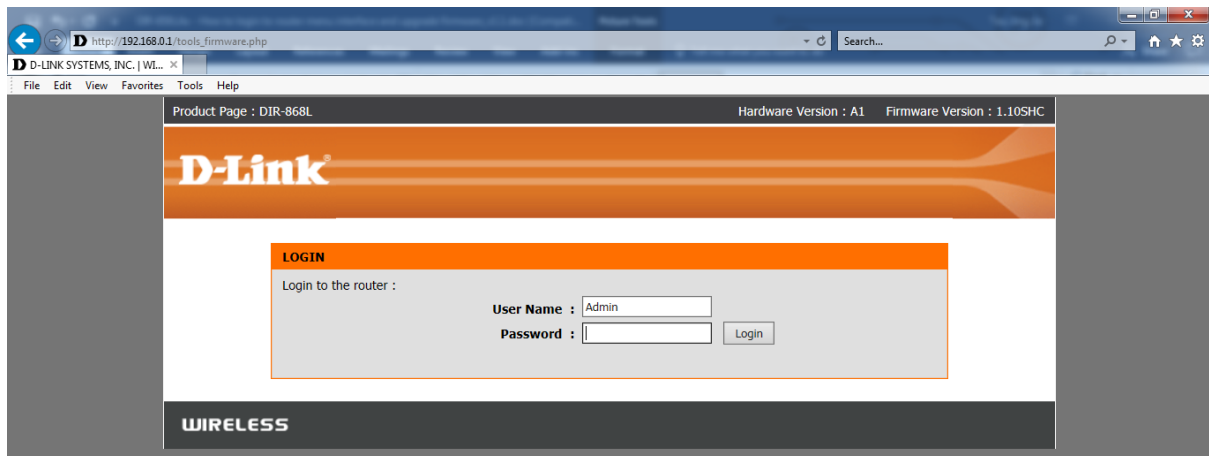
Waiting time : 129 second(s)

WIRELESS

Copyright © 2013 D-Link Corporation. All rights reserved.

Step 6: Please login with the device wireless password to access the router menu interface.

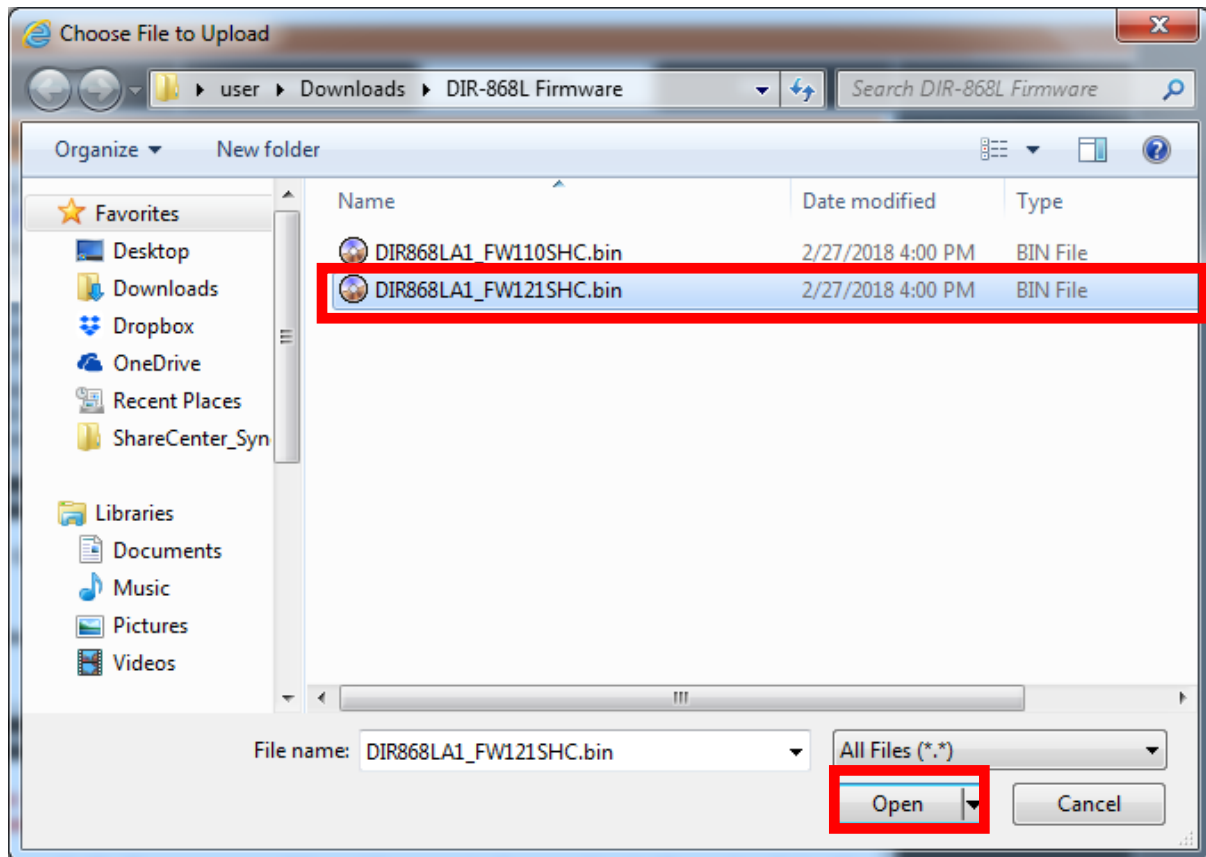
D-Link® Technical Support Setup Procedure



Step 7: Click the **Tools** tab at the top of the page and then click **Firmware** from the menu on the left-hand side. Click on Browse to locate the firmware folder.

DIR-868L	SETUP	ADVANCED	TOOLS	STATUS	SUPPORT
ADMIN	FIRMWARE UPDATE				Helpful Hints... <ul style="list-style-type: none"> • Firmware Update are released periodically to improve the functionality of your router and also to add features. If you run into a problem with a specific feature of the router, check our support site by clicking on the Check Now and see if an updated version of firmware is available for your router. • More...
TIME	<p>There may be new firmware for your router to improve functionality and performance. Click here to check for an upgrade on our support site.</p> <p>To upgrade the firmware, locate the upgrade file on the local hard drive with the Browse button. Once you have found the file to be used, click the Upload button to start the firmware upgrade.</p>				
SYSLOG	<p>The language pack allows you to change the language of the user interface on the router. We suggest that you upgrade your current language pack if you upgrade the firmware. This ensures that any changes in the firmware are displayed correctly.</p>				
EMAIL SETTINGS	<p>To upgrade the language pack, locate the upgrade file on the local hard drive with the Browse button. Once you have found the file to be used, click the Upload button to start the language pack upgrade.</p>				
SYSTEM	FIRMWARE INFORMATION				
FIRMWARE	<p>Current Firmware Version : 1.105HC</p> <p>Current Firmware Time : 09/30/2017 16:12:00</p> <p>Check Online Now for Latest Firmware Version <input type="button" value="Check Now"/></p>				
DYNAMIC DNS	FIRMWARE UPGRADE				
SYSTEM CHECK	<p>Note: Some firmware upgrades reset the configuration options to the factory defaults. Before performing an upgrade, be sure to save the current configuration.</p> <p>To upgrade the firmware, your PC must have a wired connection to the router. Enter the name of the firmware upgrade file, and click on the Upload button.</p>				
TR069	<p>Upload : <input type="text"/> <input type="button" value="Browse..."/></p> <p><input type="button" value="Upload"/></p>				
SCHEDULES					

Step 8: Ensure the firmware was successfully extracted from the zip contents. Select the desired **BIN** file and click **Open**.



Step 9: Click **Upload** to start the firmware upgrade process.

DIR-868L //	SETUP	ADVANCED	TOOLS	STATUS	SUPPORT
ADMIN	FIRMWARE UPDATE				Helpful Hints... <ul style="list-style-type: none">• Firmware Update are released periodically to improve the functionality of your router and also to add features. If you run into a problem with a specific feature of the router, check our support site by clicking on the Check Now and see if an updated version of firmware is available for your router.• More...
TIME	There may be new firmware for your router to improve functionality and performance. Click here to check for an upgrade on our support site.				
SYSLOG	To upgrade the firmware, locate the upgrade file on the local hard drive with the Browse button. Once you have found the file to be used, click the Upload button to start the firmware upgrade.				
EMAIL SETTINGS	The language pack allows you to change the language of the user interface on the router. We suggest that you upgrade your current language pack if you upgrade the firmware. This ensures that any changes in the firmware are displayed correctly.				
SYSTEM	To upgrade the language pack, locate the upgrade file on the local hard drive with the Browse button. Once you have found the file to be used, click the Upload button to start the language pack upgrade.				
FIRMWARE	FIRMWARE INFORMATION				
DYNAMIC DNS	Current Firmware Version : 1.10SHC				
SYSTEM CHECK	Current Firmware Time : 09/30/2017 16:12:00				
TR069	Check Online Now for Latest : <input type="button" value="Check Now"/>				
SCHEDULES	Firmware Version				
FIRMWARE UPGRADE					
Note: Some firmware upgrades reset the configuration options to the factory defaults. Before performing an upgrade, be sure to save the current configuration.					
To upgrade the firmware, your PC must have a wired connection to the router. Enter the name of the firmware upgrade file, and click on the Upload button.					
Upload <input type="text" value="C:\Users\user\Downloads\DIR-868L Firmwar"/> <input type="button" value="Browse..."/>					
<input type="button" value="Upload"/>					

D-Link®

FIRMWARE UPLOAD

The device is updating the firmware now.

It takes a while to update firmware and reboot the device. Please DO NOT power off the device.

Waiting time : 129 second(s)

WIRELESS

Copyright © 2013 D-Link Corporation. All rights reserved.

Step 10: The DIR-868L has successfully been firmware upgraded. Please login with the device wireless password to access the router menu interface to perform setup and configuration.

Product Page : DIR-868L Hardware Version : A1 Firmware Version : 1.21SHC

D-Link®

LOGIN

Login to the router :

User Name :

Password :

WIRELESS

--END--