

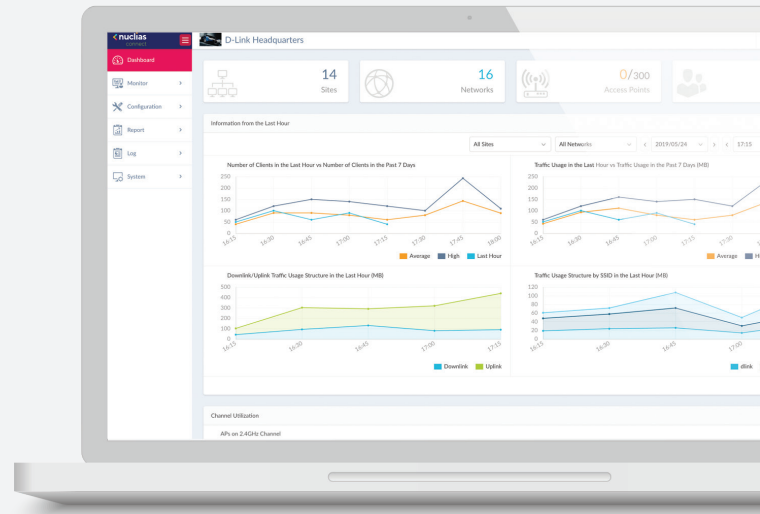
NUCLIAS CONNECT WIRELESS N PLENUM-RATED POE ACCESS POINT

DAP-2360



Nuclias Connect Overview

Welcome to Nuclias Connect, D-Link’s centralized management solution for Small-to-Medium-Sized Business (SMB) networks. Nuclias Connect makes it easier to analyze, automate, configure, optimize, scale, and secure your network – delivering the convenience of an Enterprise-wide management solution, at an SMB price.



▲ Intuitive Dashboard Interface

Solution Features

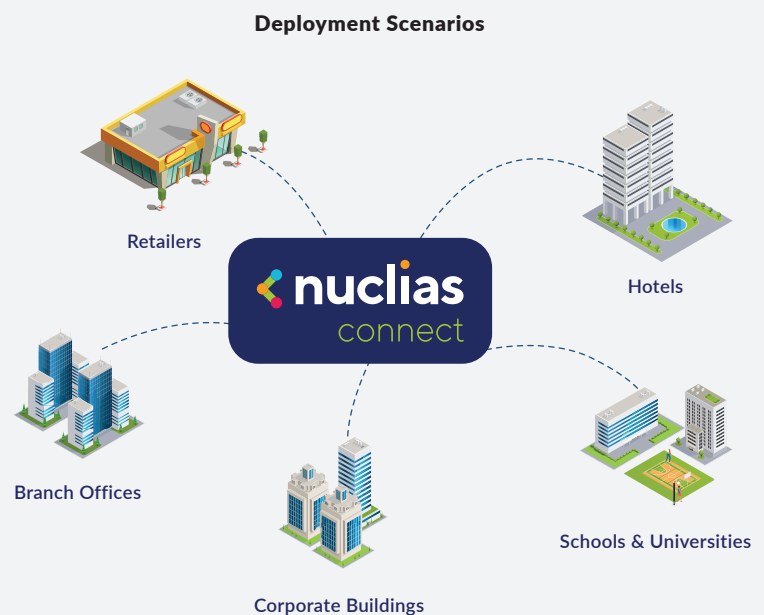
- » Free-to-Download Nuclias Connect Management Software
- » License-Free Access Points
- » Backwards-Compatibility
- » Intuitive Interface
- » Inexpensive Hardware Controller*
- » Traffic Reporting and Analytics
- » Remote Configuration and Batch Configuration.
- » Multi-Tenant and Role-Based Administration
- » Searchable and Auditable Event and Change Logs
- » 802.1x¹ and RADIUS Server, POP3, LDAP
- » Multilingual Support
- » Front-Desk Ticket Management
- » Authentication and Payment Gateway (Paypal) Integration via Customizable Captive Portal

Solution Benefits

1 / Network-Wide Management

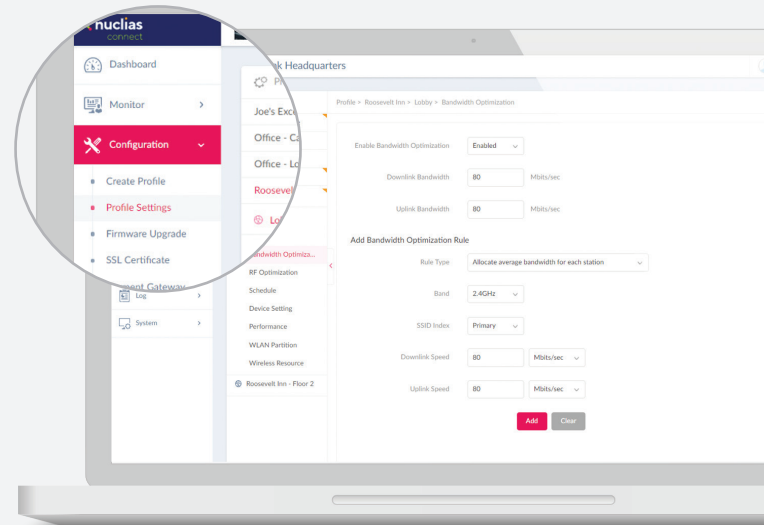
Free to download on Windows server (or Linux via Docker), the Nuclias Connect software currently supports numerous new and legacy D-Link Access Point (AP) models, and is capable of managing up to one thousand APs without the need for additional licensing charges. Coupled with a local lite management Smartphone app and an inexpensive optional hardware controller (The Hub*), Nuclias Connect is even suitable for remote locations where a dedicated PC or server might not be practical.

*Please contact your local D-Link office for availability



2 / Flexibility to Meet Your Needs

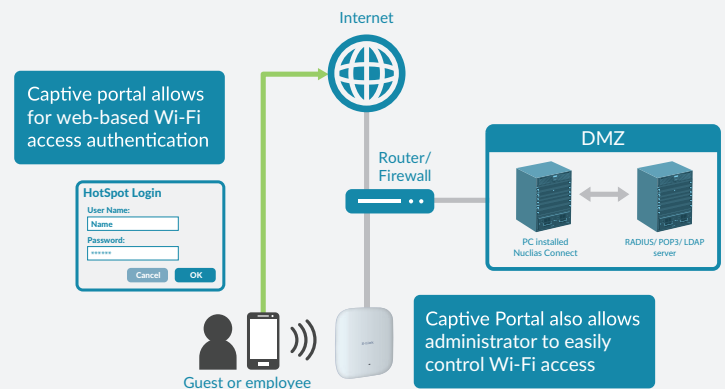
Through software-based monitoring and remote management of all wireless Access Points (APs) on your network, Nuclias Connect offers tremendous flexibility compared to traditional hardware-based management systems. Configuration can be done remotely and management software is customizable. Nuclias Connect enables control and analytics of a broad or fine granularity, presentable in a variety of formats. Additionally, admins can provide and manage a variety of distributed deployments, including the option to configure settings and customize admin accounts in a specific manner for each deployment. Nuclias Connect gives you the financial and technical flexibility to expand from a small network to a large one (up to 1,000 APs), while retaining a robust and centralized management system.



▲ Network-Wide Configuration

3 / Easy Administration

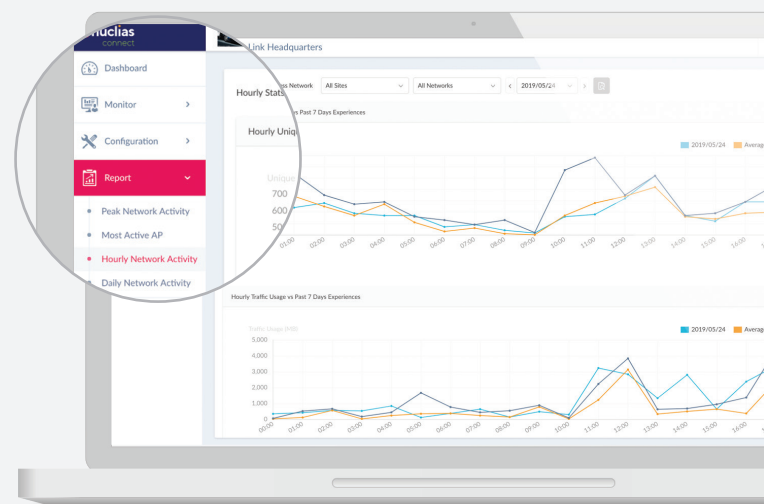
Nuclias Connect supports multi-tenancy, so network admins can grant localized management authority for local networks. In addition, because APs can support eight SSIDs per radio, administrators have the option of using one SSID to create a guest network for visitors. Nuclias Connect allows for multiple user authentications and also makes it possible to configure specific access controls for each SSID, giving admins the option of configuring separate internal networks for different subnets. This means that more advanced Value-Added Services, such as Captive Portal or Wi-Fi Hotspot, can be used to help manage wireless network traffic.



▲ Captive Portal with Customizable Login Page

4 / Insights at a Glance

Gain an extensive understanding of your network through usage analytics and status reports which can be viewed easily at a glance. Insights derived from traffic data can create business value. Traffic can be viewed across the entire network or to the level of a single AP.



▲ Statistics - Hourly Network Activity

5 / Network Security and Data Privacy

Nuclias Connect balances the need for access convenience with the need for security. All communications over the system are encrypted (WPA2/WPA3¹), with your user data never leaving your possession. Additional security measures (such as firewalls) can also be added to your network, with no unneeded technical difficulty.

Product Introduction

The DAP-2360 Nuclias Connect Wireless N Plenum-rated PoE Access Point is designed to support small-to-medium business or enterprise environments by providing network administrators with secure and manageable wireless LAN options, and utilizing the cutting-edge speed of Wireless N.

Wireless Performance

- » 802.1n (N300) wireless
- » Dedicated Gigabit LAN port for a wired connection
- » Powerful Wi-Fi Multimedia™ Quality of Service (QoS)
- » User limit to optimize performance between Access Points

Trusted Security

- » 128 bit Personal/Enterprise encryption
- » 64/128 bit WEP
- » MAC-based access filtering and WLAN partitioning
- » Captive Portal with industry-standard authentication
- » VLAN support for network segmentation

Extensive Management

- » Powerful management, monitoring, and troubleshooting functionality with Nuclias Connect
- » Flexible access through web (HTTP), SSL, SSH, and Telnet
- » Multiple operation modes including Access Point, Wireless Distribution System (WDS), WDS with Access Point, and Wireless Client
- » Wireless scheduling to manage access point activity

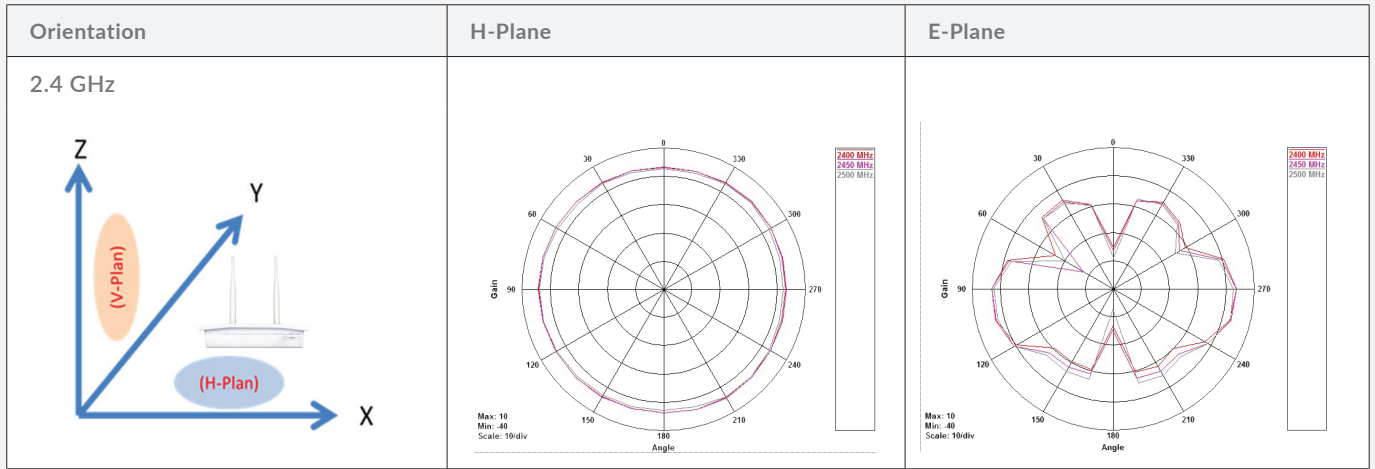
Versatile Installation

- » Powered by IEEE 802.3af Power over Ethernet for remote installation
- » Small form-factor for easy installation
- » Multiple installation options including wall and ceiling mounting

Technical Specifications

General		
Device Interfaces	1 x IEEE 802.11b/g/n wireless ¹	1 x Gigabit LAN (supports PoE)
Standards	IEEE 802.11b/g/n ¹ IEEE 802.3i/u/ab	IEEE 802.3az Energy-Efficient Ethernet (EEE) IEEE 802.3af Power over Ethernet
Antennas	2 x external <ul style="list-style-type: none"> 3.6 dBi at 2.4 GHz 	
Operating Frequency ²	2.4 GHz band: 2.4 to 2.4835 GHz	
Maximum Output Power	2.4 GHz band: 26 dBm	
Data Signal Rate	2.4 GHz band: Up to 300 Mbps ²	
Functionality		
Security	128-bit personal wireless encryption 128-bit enterprise wireless encryption WEP 64/128-bit encryption	SSID broadcast disable MAC address access control Network Access Protection (NAP) Internal RADIUS server
Network Management	D-Link Nuclias Connect Telnet Secure Telnet (SSH) Web (HTTP)	Secure Socket Layer (SSL) Traffic control SNMP v1/v2c/v3
LEDs	Power/status	
Physical		
Dimensions	166 x 188 x 36 mm (6.54 x 7.40 x 1.42 inches)	
Weight	689 g (1.52 lb)	
Power Supply	External power adapter: 12 V/1 A	IEEE 802.3af PoE
Maximum Power Consumption	7.9 W (With PoE)	6.5 W (without PoE)
Temperature	Operating: 0 to 40 °C (32 to 104 °F)	Storage: -20 to 65 °C (-4 to 149 °F)
Humidity	Operating: 10% to 90% non-condensing	Storage: 5% to 95% non-condensing
Meantime Between Failure (MTBF)	> 30,000 hours	
Certifications	FCC CE ³	UL Wi-Fi® Certified

Antenna Pattern



Order Information	
Part Number	Description
DAP-2360	Nuclias Connect Wireless N Plenum-rated PoE Access Point

¹ Maximum wireless signal rate derived from IEEE standard 802.11 and 802.11ac specifications. Actual data throughput will vary. Network conditions and environmental factors, including volume of network traffic, building materials, construction, and network overhead may lower actual data throughput rate. Environmental factors will adversely affect wireless signal range.

² Please note that operating frequency ranges vary depending on the regulations of individual countries and jurisdictions. The DAP-2680 may not support the 5.25 - 5.35 GHz and 5.47 - 5.725 GHz frequency ranges in certain regions.

³ For the EU region, this product is compliant with CE regulations and operates within the following frequency ranges: 2.4 - 2.4835 GHz, 5.150 - 5.250 GHz, 5.250 - 5.350 GHz, and 5.470 - 5.750 GHz.

Updated 01/03/20

Specifications are subject to change without notice. D-Link is a registered trademark of D-Link Corporation and its overseas subsidiaries. All other trademarks belong to their respective owners. ©2020 D-Link Corporation. All rights reserved. E&OE